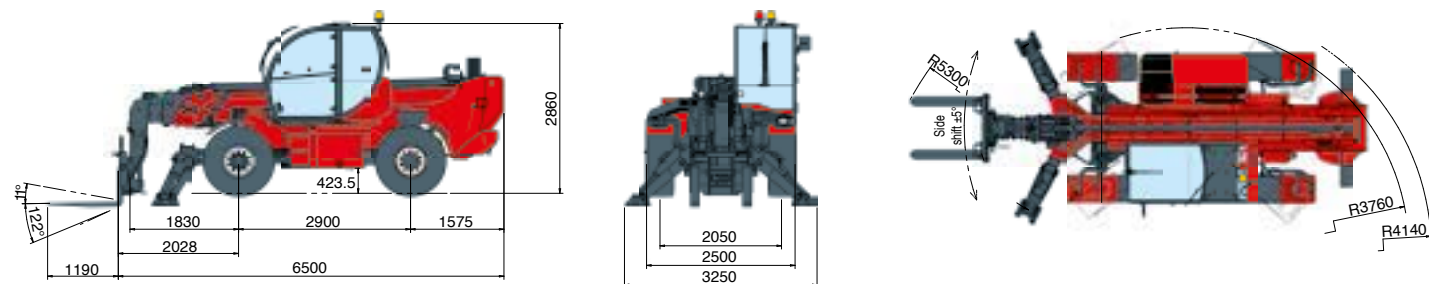


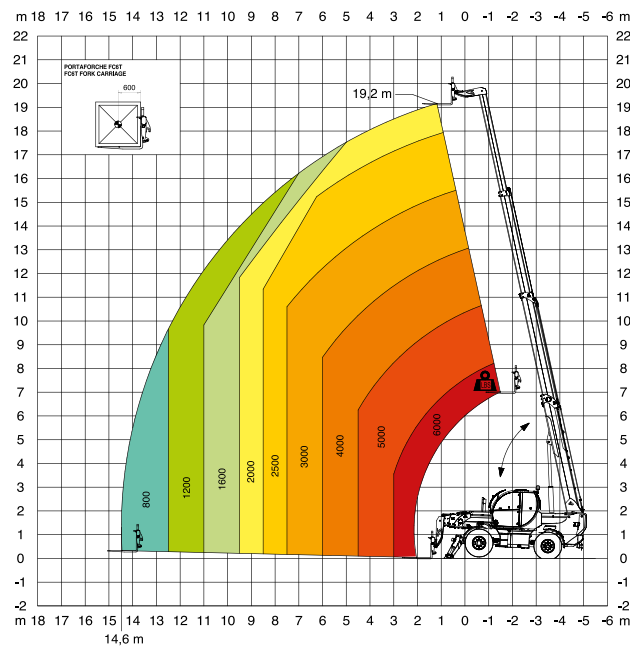
MACHINE MODEL	Telescopic handler	TH 6.20	
	Maximum lifting capacity	6.000 kg (center of gravity 600 mm)	
	Maximum lifting height	19,2 m	
ENGINE - DEUTZ	Type	Deutz TCD 3.6 L4 - stage IV	Deutz TCD 3.6 L4 EDG - stage 3A compliant
	Rated power	100 kW - 134 HP at 2.200 rpm	100 kW - 134 HP at 2.200 rpm
	Maximum torque	500 Nm at 1.600 rpm	500 Nm at 1.600 rpm
	Displacement	3,6 l	3,6 l
	Cylinders	4 in line	4 in line
	Fuel	Diesel direct injection turbocharged	Diesel direct injection turbocharged
	Cooling system	Water — intercooler	Water — intercooler
TRANSMISSION	Type	Hydrostatic	
	Model	Bosch — Rexroth	
	Maximum pressure	500 bar	
	Displacements	Variable displacement pump electronically controlled. Variable displacement motor	
	Gear box	2 speeds forward-reverse	
AXLES AND BRAKES	Type	Axles with epicyclic reduction gear	
	Rear axle	Oscillating and steering with hydraulic locking	
	Front axle	Steering - tilting - shifting	
	Service brake	Hydraulically activated, oil-immersed multi-disc type on each axle	
	Parking brake	Hydraulic with negative action	
	Tyres dimensions	445/65 R22,5	
PERFORMANCE	Max. travel speed	40 km/h	
	Drawbar pull	66 kN	
	Gradeability	44%	
	Turning radius (end of forks)	5.300 mm	
WEIGHTS	Total unladen	14.500 kg	
	Front axle unladen (boom retracted and lowered)	6.000 kg	
	Rear axle unladen (boom retracted and lowered)	8.500 kg	
TANKS CAPACITIES		Deutz stage IV	Deutz stage3A
	Fuel tank	150 l	150 l
	AdBlue	10 l	n.a.
	Hydraulic oil tank	170 l	170 l
	Engine oil tank	9 l	9 l
	Cooling liquid	23 l	23 l
HYDRAULIC CIRCUIT	Max. operating system pressure	350 bar	
	Circuit type	Load sensing	
	Service pump	Bosch Rexroth — Variable displacement	
	Controls for boom and turret movements	Danfoss — Electroproportional valve SIL 2	
	Controls for stabilizers	Bosch Rexroth — Electro-hydraulics controls	
	Movements control	2 joystick Danfoss with two shafts with dead man safety device - Management with CAN bus technology	
CONFORMTY TO STANDARDS	EN 13849: concerning the safety of all controls of the machine EN 1459: concerning rough terrain telescopic handlers EN 13000: concerning the standard of hydraulic cranes EN 280: concerning the standard of aerial platforms FOPS/ROPS 97/68/CE: concerning engine emissions standards		



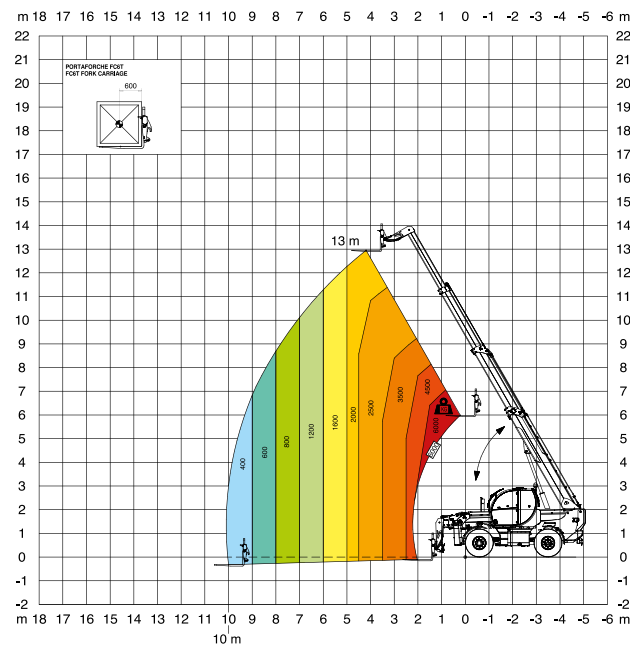
Maximum lifting height: 19,2 m  
Maximum reach: 14,6 m  
Electronically controlled hydrostatic transmission  
Automatic levelling device  
Pivoting stabilizers



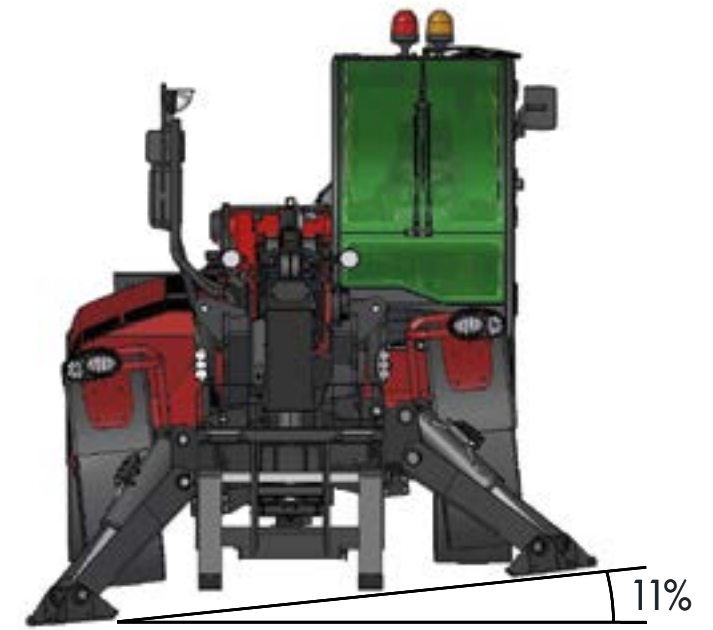
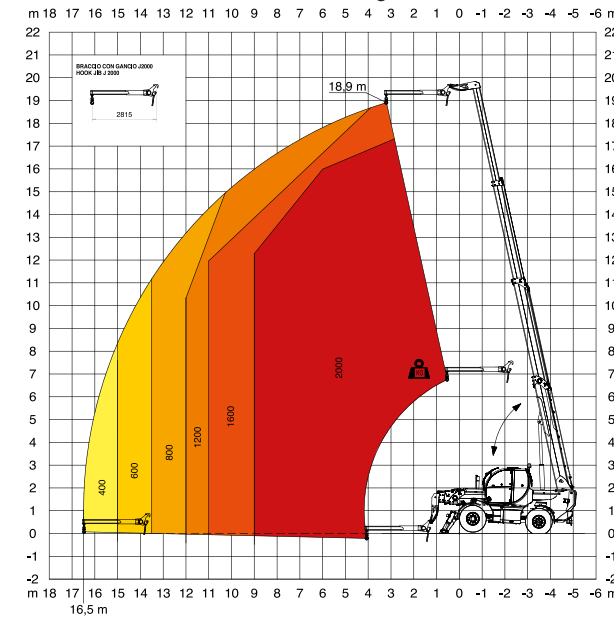
Load chart on stabilizers



Load chart on tyres



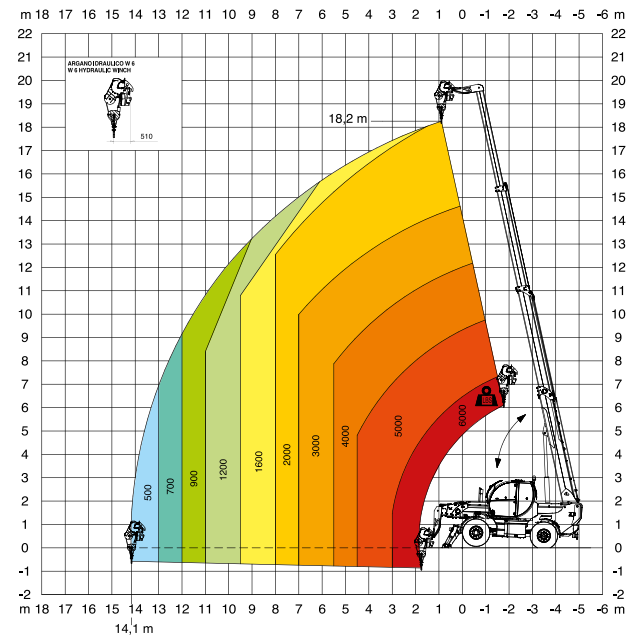
**J 2000**  
Jib 2.000 kg



Leveling works both on wheels and on stabilizers as the front axle is coupled with the stabilizers

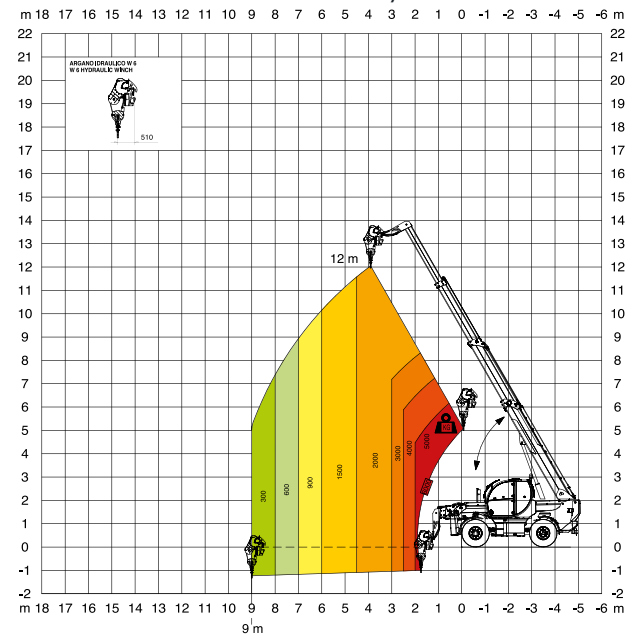
**W 6**

Winch 6 ton on stabilizers



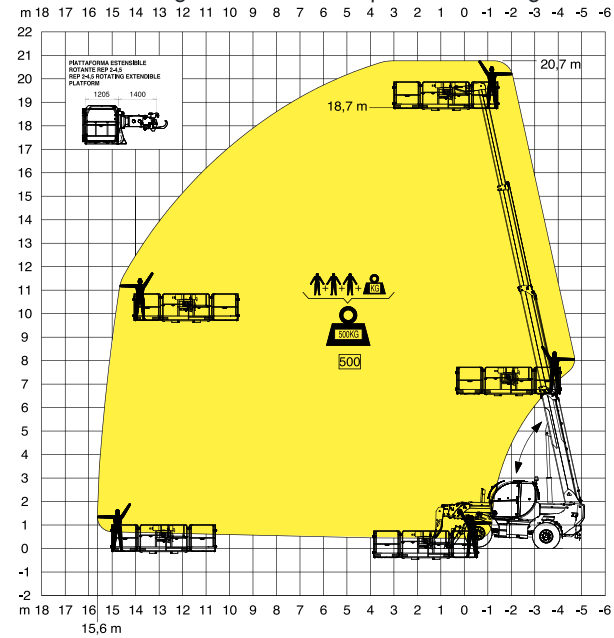
**W 6**

Winch 6 ton on tyres



**REP 2-4,5**

Rotating extendable men platform 500 kg



**JW 2000**

Jib Winch 2.000 kg on stabilizers

