

# MANISCOPIC

# MHT 860 L

Turbo

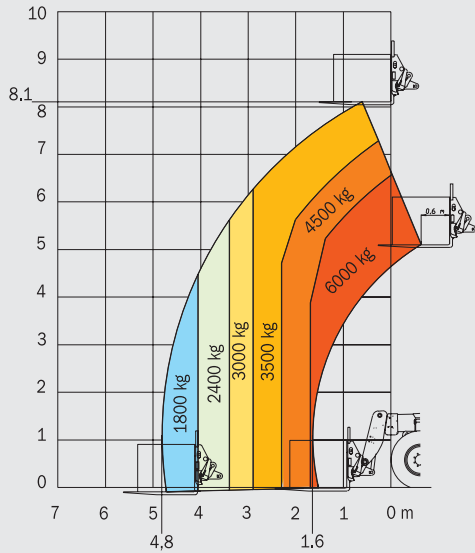


- Capacity : 6000 kg
- Lift height : 8.10 m
- Engine : 132 cv
- 4 wheel steer – 4 wheel drive
- Hydrostatic transmission
- Frame levelling 10°/10°

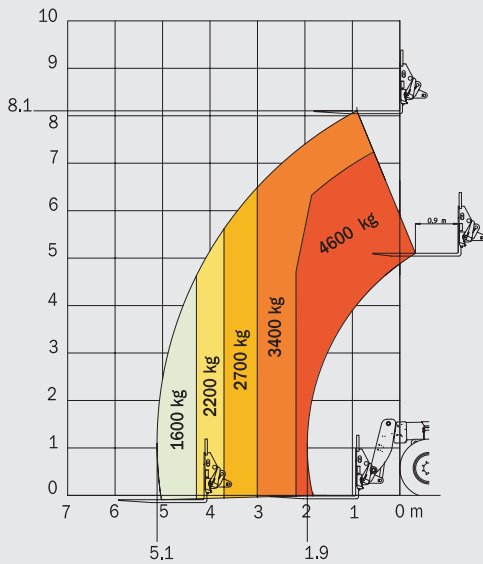
 **MANITOU**

# MHT 860 L TURBO

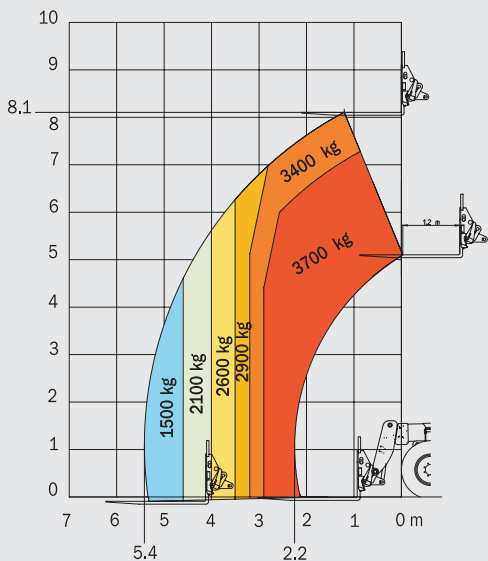
## LOAD CENTRE AT 600 MM



## LOAD CENTRE AT 900 MM



## LOAD CENTRE AT 1200 MM



## ENGINE

Diesel PERKINS 1104C-44 TA

Capacity :	4 cylinders/4400 cm <sup>3</sup>
Power (ISO/TR 14396):	132 HP/97 kw
Rated speed	2200 r.p.m.
Maximum torque at 1400 r.p.m. :	500 Nm
Injection directe	
Fan :	puller
Cooling :	water
Anti-polluting standards :	EUR2
Battery :	12 Volts
Capacity :	120 Ah

## LIFT CAPACITY / HEIGHT

Load centre	at 600 mm	at 900 mm	at 1200 mm
Lift capacity :	6000 kg	4600 kg	3700 kg
Capacity at max. height :	3500 kg	3400 kg	3400 kg
Capacity at max. front reach :	1800 kg	1600 kg	1500 kg
Lift height :	8.10 m	8.10 m	8.10 m
Maximum front reach :	4.80 m	5.10 m	5.40 m

## TRANSMISSION

Hydrostatic transmission	
Hydrostatic pump with variable flow and continuous speed regulation	
Reversing shift :	electro-magnetic
Differential central :	NO
2 forward and reverse speeds :	
Low speed :	10 km/h
Fast speed :	32 km/h

## HYDRAULICS

**Main pump :** Piston Load Sensing Haute pression

Maximum pressure :	275 bar
Capacity :	140 L/mn

**Steering pump**

Type :	Load Sensing
Maximum pressure :	170 bar

**Drive Type :** Proportional hydraulic joystick with 3 movement combination

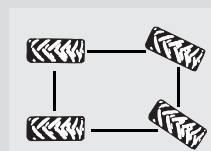
- 1- Lifting / Crowding
- 2- Boom extension / Attachment
- 3- Lifting / Boom extension

## AXLES

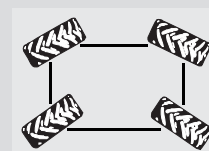
HURTH "Heavy Duty", oil bath with epicycloïdal reduction with 4 satellites Integrated steering cylinders with double action in high position

Frame levelling 10°/10° on front axle

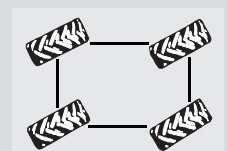
3 steering modes:



2 wheel steering

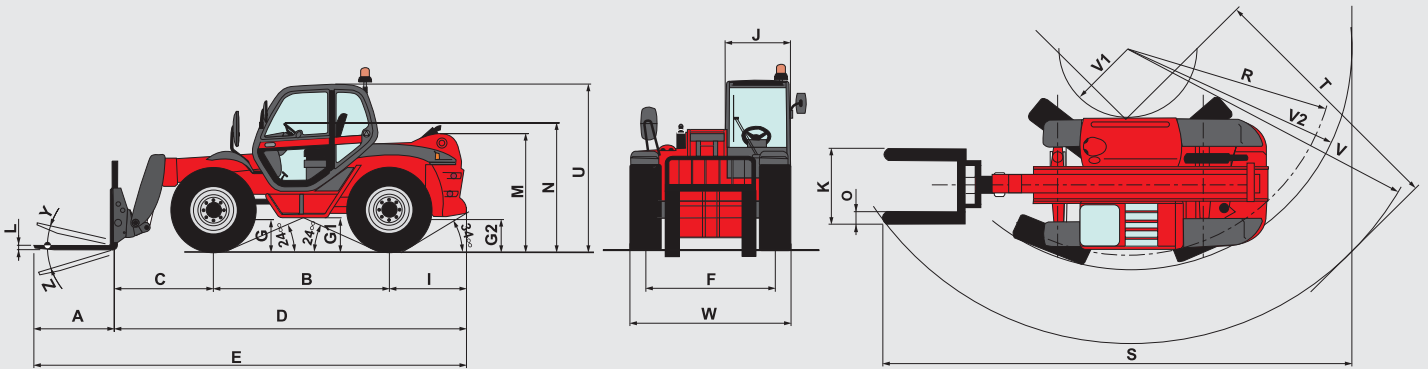


4 wheel steering



Crabsteer

## DIAGRAMS



A	B	C	D	E	F	G	G1	G2	I	J	K	L	M	O	R	S	T	U	V	V1	V2	W	Y	Z
1200	2730	1540	5365	6565	1930	465	500	465	1095	865	1750	60	1725	200	3550	7950	4050	2450	4850	1130	3750	2400	11°	125°

### BRAKES

Type : oil bath multidisc  
 Drive type : hydraulic  
 On axle : front + rear  
 Parking brake on front axles :  
 Oil bath multidisc negative parking brake.

### CAPACITIES

Cooling circuit : 15 L  
 Engine oil : 8.1 L  
 Equipment hydraulic oil : 120 L  
 Fuel tank : 118 L

### TYRES

Model : 18 - 22.5 16 PR  
 Pressure : 5 bar  
 Drawbar pull : 11200 daN

### STANDARD EQUIPMENTS

- ROPS-FOPS cabin
- GRAMMER seat
- Front and rear wipers
- Driving lights
- Rotating beacon
- Left rearview mirror
- Safety device with automatic lock of aggravating movements
- Safety valves on cylinders
- Heating

### LIFTING/TELESCOPING MOTIONS

Unladen lifting : 9.8 sec  
 Unladen lowering : 7.8 sec  
 Unladen extending internal telescope : 11.3 sec  
 Unladen retracting internal telescope : 6.7 sec

### FORKS

Dimensions : 200 x 60 x 1200 mm  
 Weight of forks carriage : 780 kg

### OPTIONS

- Air conditioning
- Comfort seat
- Roof wipers
- Cabin rearview mirror
- Tyres 445/70 R24

### WEIGHT

Total weight without equipment : 10735 kg  
 Total weight with equipment : 11515 kg  
 Total weight laden with forks : 17515 kg

#### Load on axle with standard equipment (unladen)

On front axle, boom retracted : 4500 kg  
 On rear axle, boom retracted : 7015 kg

#### Load on axle with standard equipment (laden)

On front axle, boom retracted : 15695 kg  
 On rear axle, boom retracted : 1820 kg

# MHT 860 L TURBO

# Manitou, material handling world leader

Inventor of the rough terrain forklift truck, Manitou offers today the most comprehensive range to meet all specific handling and personal lifting requirements :



Telescopic trucks  
**MANISCOPIC**

Rough terrain and semi industrial masted trucks  
**MANITOU**

Access equipment  
**MANIACCESS**

Compact telescopic handler  
**Twisco**

Truck mounted forklifts  
**MANITRANSIT**

Backhoe/Loader with telescopic boom  
**MANIHOE**

Swinging arm and articulated wheeled loaders  
**MANILOADER**

Electric pallet trucks and electric stackers  
**MANILEC**



## A network of skilled professionals at your service

With a network of 500 service and parts centres in more than 100 countries, Manitou provides an efficient after-sales support based on the expertise of 2000 factory trained technicians.

This publication in no way constitutes an offer and the company reserves the right to alter specification without prior notice. The MANITOU models presented in this brochure can be supplied complete with optional equipment attachments.

**MANITOU BF SA**

B.P. 249 - 44158 Ancenis Cedex - France  
Tél. : 33 2 40 09 10 11 / Export Department Fax : 33 2 40 09 10 97  
www.manitou.com

700004EN

