

**M-X30 / M-X50 / M-X70**

**MASTED FORKLIFT TRUCKS**



 **MANITOU**

[www.manitou.com](http://www.manitou.com)

# M-X 30 / M-X 50 / M-X 70

3 models to choose from



M-X 30

3 tons



M-X 50

5 tons



M-X 70

7 tons







## **MANITOU: AT YOUR SIDE ON ANY CONSTRUCTION SITE**

The M-X range is Manitou's most established range. Unparalleled in the market, this range was developed with more than **50 years of working experience, innovations, and listening to our users.**

Known for their **durability** and **performance** even on the steepest sites, the all-terrain Manitou forklift trucks go where others do not!

In combining **simplicity** and **productivity**, the new M-X30, M-X50 and M-X70 forklift trucks are essential allies for your construction sites.

The **power** and the **manageability** of the M-X allow you to perform your job **effectively** and **safely**.



# SIMPLICITY

## ■ ■ Simplified USAGE and MAINTENANCE

COMMONALITY across all models



### Spacious cab with a panoramic view

- Full vision cab with optional doors which can be securely folded back.
- Suspended cabin reducing vibrations for the operator.
- Efficient heating and ventilation as standard, air conditioning (optional).

### Ergonomic levers

The user benefits from being ideally positioned to use the controls which are naturally located within easy reach.



Very tight turning radius

**4.10 m**



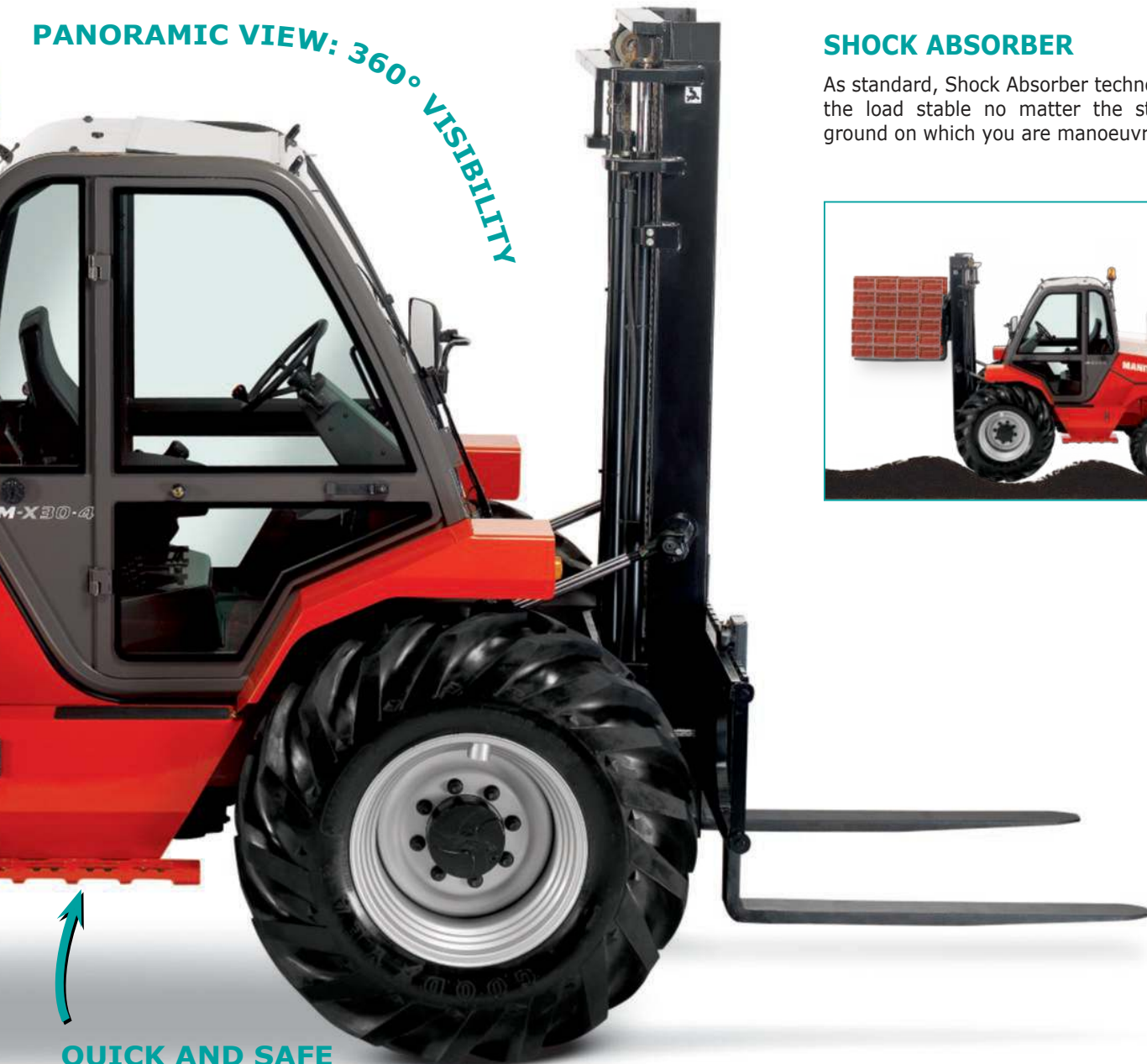




### EASE OF MAINTENANCE

whatever the model  
When the bonnet is **fully open** complete access **can be gained** to the engine, gauges, filters and lubricators, to reduce the maintenance time and to help prevent downtime.

PANORAMIC VIEW: 360° VISIBILITY



### SHOCK ABSORBER

As standard, Shock Absorber technology keeps the load stable no matter the state of the ground on which you are manoeuvring.



### QUICK AND SAFE ACCESS

via a large door and a non-slip step

# PRODUCTIVITY

## ■ ■ PERFORMANCE and STURDINESS

### Power 95 HP

STAGE 3A Engine.  
Torque 392 Nm.  
4 cylinders.  
4.4l engine size.



### Flexible Transmission

The torque converter transmission allows the operator to choose between the speed of movement on smooth surfaces or additional torque for operating on steeper gradients (4 Speed Gearbox).

### Lifting height up to

**6 m**



### Exceptional all terrain capability

Large diameter front wheels with good load distribution on both axles with central differential locking system.

Rear axle can move through a wide angle



### Optimal stability

Its **width** ensures the forklift truck has better stability for extra safety for lateral loading.



Up to **40 cm**

**Good ground clearance**

### Monobloc frame

fully resistant to torsional stress when operating on rough terrain.

**Mast reclines up to**

**15°**






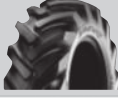

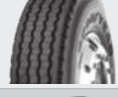


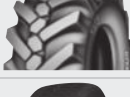

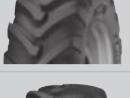

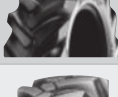

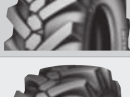
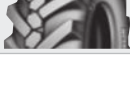
**MANITOU masts**, recognised quality for over 50 years!





	Forklift type	Mast (m)	Free lift (mm)	Height of mast fully retracted (mm)	Height of mast extended (mm)	Height with Max Capacity. (m)		Capacity at Max. Height (kg)	
						Including sideshift	Not including sideshift	Including sideshift	Not including sideshift
<b>Full visibility duplex</b>	M-X 30	3.00	130	2305	4045	3.00	3.00	3000	3000
	M-X 50		-	2560	4115			4700	5000
	M-X 30	3.30	130	2455	4345	3.30	3.30	3000	3000
	M-X 50		-	2710	4415			4700	5000
	M-X 30	3.50	130	2555	4545	3.50	3.50	3000	3000
	M-X 50		-	2810	4615			4700	5000
	M-X 70	3.60	-	3205	5005	3.60	3.60	6300	7000
	M-X 30	3.70	130	2715	4745	3.70	3.70	3000	3000
	M-X 50		-	2910	4815			4700	5000
	M-X 30	4.00	130	2905	5045	4.00	4.00	3000	3000
	M-X 50		-	3060	5115			4700	5000
	M-X 70		-	3405	5405			6300	7000
	M-X 30	4.50	130	3155	5545	4.00	4.00	2800	2900
	M-X 50		-	3305	5615			4050	4500
	M-X 70		-	3655	5905			5850	6500
	M-X 30	5.00	130	3405	6045	4.00	4.00	2400	2600
M-X 50	-		3560	6115	3600			4000	
M-X 30	5.50	130	3655	6545	4.00	4.00	1500	2000	
<b>Free lift duplex</b>	M-X 30	3.00	1383	2305	3962	3.00	3.00	3000	3000
	M-X 50		1528	2585	4117			4700	5000
	M-X 30	3.30	1533	2455	4262	3.30	3.30	3000	3000
	M-X 50		1678	2735	4417			4700	5000
	M-X 30	3.50	1633	2555	4462	3.50	3.50	3000	3000
	M-X 50		1778	2835	4617			4700	5000
	M-X 30	3.70	1793	2715	4662	3.70	3.70	3000	3000
	M-X 50		1878	2935	4817			4700	5000
	M-X 30	4.00	1983	2905	4962	4.00	4.00	3000	3000
M-X 50	1978		3085	5517	4700			5000	
<b>Full visibility triplex</b>	M-X 30	5.50	-	3055	6725	4.00	4.00	1500	2000
<b>Free lift triplex</b>	M-X 30	3.70	1283	2205	4662	3.70	3.70	3000	3000
	M-X 50		1265	2310	4805			4700	5000
	M-X 30	4.00	1383	2305	4962	4.00	4.00	3000	3000
	M-X 50		1365	2410	5105			4700	4700
	M-X 30	4.30	1533	2455	5262	4.00	4.30	2900	3000
	M-X 50		1465	2510	5404		4.00	4050	4500
	M-X 50	4.50	1540	2585	5605	4.00	4.00	3600	4000
	M-X 30	4.70	1633	2555	5662	4.00	4.00	2600	2700
	M-X 50		1600	2645	5805			3350	3700
	M-X 30	5.00	1793	2715	5962	4.00	4.00	2400	2600
	M-X 50		1715	2760	6105			3000	3300
	M-X 30	5.50	1983	2905	6462	4.00	4.00	1500	2000
	M-X 50		1865	2910	6601			2150	2400
	M-X 30	6.00	2233	3155	6962	4.00	4.00	1600	1800
	M-X 50		2040	3085	7105			1800	2000



			Working envelope	Tyre width (mm)	Overall width (mm)	
<b>Standard</b>	<b>M-X 30-2</b>	Front	14.5 R 20 - MPT80 TL 18 PR 143 G/J	350	1900	
		Rear	10R17.5 G291 134M	250	1822	
	<b>M-X 30-4</b>	Front	16.5 / 85 - 24 SGI 14PR	435	2105	
		Rear	10.5 / 80 - 18 TG42 TL 10PR	274	2034	
	<b>M-X 50-2</b>	Front	18-19.5 A224 18 PR TL	457	2057	
		Rear	10R17.5 G291 134M	250	1838	
	<b>M-X 50-4</b>	Front	18 - 22.5 MPT 06 16PR TL (445 / 65 R22.5)	460	2080	
		Rear	340 / 80 - R18 XMCL TL 143A8	351	2091	
	<b>M-X 70-2</b>	Front	18 R 19.5 XF TL (445 / 65 R19.5)	450	2150	
		Rear	265 / 70 R19.5 HTR1	275	1855	
<b>Option</b>	<b>M-X 30-2</b>	Front	380 / 75 R 20 XMCL TL 148A8	385	1935	
	<b>M-X 30-4</b>	Rear	12.0-18 T86 Tube type 12PR	314	2074	
		Rear	10.5-18 12PR	270	2030	
	<b>M-X 50-2</b>	Front	18 R 19.5 XF TL (445 / 65 R19.5)	450	2050	
	<b>M-X 50-4</b>	Front	18 R 22.5 XF TL (445 / 65 R22.5)	450	2070	
	<b>M-X 70-2</b>	Front	18 R 22.5 XF TL (445 / 65 R22.5)	450	2150	

# APPLICATIONS











## Tailor-made finance to make the best use of your funds

You can plan the purchase of your forklift with peace of mind by using MANITOU<sup>\*</sup> financing opportunities.

You will have simple solutions adapted to your needs and seasonal requirements. If you want to make a rapid investment, consider asking us for a personalised proposal to take your situation into account.

\* MANITOU Finance solutions are available in certain countries.

## MANITOU maintenance contract

2 levels of maintenance adapted to your needs. You are sure of:

- equipment always in good working condition
- a reduction of repair costs as a result of regular servicing
- authentic standardised services

- Labour
- Attendance costs



- Labour
- Attendance costs
- Parts and lubricants



## MANIPLUS extension of guarantee

With **MANIPLUS** you can take out an extension of guarantee of 12 or 24 months.

## EASY MANAGER

A simple and flexible system for fleet management (with or without geolocation) to provide optimum service from your machines. **EASY MANAGER** gives you:

- real-time materials management
- simple and easy way of managing your machinery activity and maintenance
- maximise your asset and safeguard your equipment



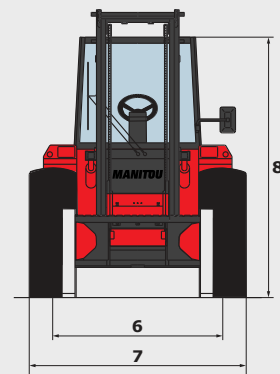
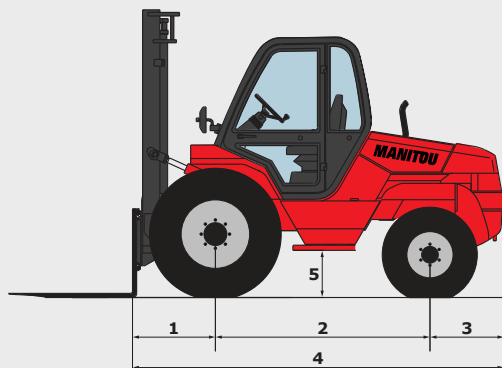
## MANITOU spare parts

Utilising genuine MANITOU spare parts is sure to prolong the best performance capability of your machine. Your MANITOU dealer has access to a stock of 70,000 part numbers, available in 24 hours in Europe (48 hours outside Europe).



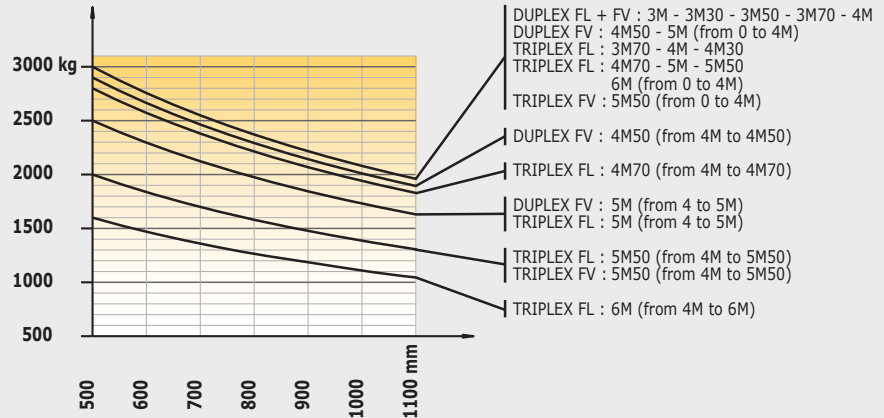
# M-X30 M-X50 M-X70

	M-X 30-2	M-X 30-4	M-X 50-2	M-X 50-4	M-X 70-2
<b>Lifting</b>					
Max. capacity	3000 kg at 500 mm CDG		5000 kg at 600 mm CDG		7000 kg at 600 mm CDG
Lifting height (standard mast)	3.70 m		3.70 m		4.00 m
Max. lifting height	6.00 m		6.00 m		4.50 m
<b>Unladen time (standard mast)</b>					
Lifting	0.6 m/s		0.4 m/s		0.4 m/s
Lowering	0.5 m/s		0.4 m/s		0.4 m/s
<b>Tyres</b>					
Forward	14.5 R 20 - MPT80 TL 18 PR 143 G/J	16.5 / 85 - 24 SGI 14PR	18-19.5 A224 18 PR TL	18 - 22.5 MPT 06 16PR TL (445 / 65 R22.5)	18 R 19.5 XF TL (445 / 65 R19.5)
Backward	10R17.5 G291 134M	10.5 / 80 - 18 TG42 TL 10PR	10R17.5 G291 134M	340 / 80 - R18 XMCL TL 143A8	265 / 70 R19.5 HTR1
<b>Braking</b>					
Service brake	oil immersed multi-disc braking on the front axle				
Parking brake	oil immersed multi-disc mechanics on the front axle				
<b>Engine</b>					
Type	PERKINS 1104 D - 44 T - STAGE 3A				
Cubic capacity	4 cyl. - 4400 cm <sup>3</sup>				
Power	95 HP / 70 kW				
Max. torque	392 Nm at 1400 rpm				
Injection	direct				
Cooling	water				
Laden drawbar pull	4250 daN	5870 daN	6230 daN	10360 daN	7960 daN
<b>Transmission</b>					
Gearbox	mechanical				Powershift
Reversing shift	electro-hydraulic				
Number of gears (forward/reverse)	4/4				4/3
Max. travel speed (may vary according to applicable regulations)	24 km/h	27 km/h	22 km/h	24 km/h	
Front axle differential lock	yes	no	yes	no	yes
Control for 2/4 wheel drive	no	yes	no	yes	no
<b>Controls</b>					
	hydro-proportional levers for all movements				
<b>Hydraulics</b>					
	85 l/min - 185 bar		85 l/min - 210 bar		85 l/min - 230 bar
<b>Capacities</b>					
Hydraulic oil	64 l				108 l
Fuel	85 l				115 l
<b>Unladen weight (with standard mast and forks)</b>					
	5430 kg	5620 kg	7470 kg	7660 kg	9810 kg
<b>Dimensions</b>					
1. Front wheel centre to carriage	0.81 m	0.81 m	0.76 m	0.76 m	0.80 m
2. Wheelbase	2.10 m	2.10 m	2.12 m	2.12 m	2.49 m
3. Rear wheel centre to rear face	0.74 m	0.74 m	0.86 m	0.86 m	0.86 m
4. Overall length to carriage	3.63 m	3.63 m	3.75 m	3.75 m	4.16 m
5. Ground clearance	0,38 m	0.40 m	0,36 m	0.38 m	0.39 m
6. Inside tyre width	1.67 m	1.67 m	1.62 m	1.62 m	1.70 m
7. Overall width	2.10 m	2.10 m	2.10 m	2.10 m	2.15 m
8. Overall height	2,46 m	2,54 m	2,42 m	2,50 m	2,44 m
Standard forks (length x width x thickness)	1200 x 125 x 40 mm	1200 x 125 x 40 mm	1200 x 150 x 60 mm	1200 x 150 x 60 mm	1200 x 150 x 70 mm
Turning radius	4.10 m	4.10 m	4.16 m	4.16 m	4.21 m
Tilt standard mast (forward/backward)	6° / 12°		6° / 12°		15° / 15°
<b>Noise and vibration</b>					
Noise at driving position (LpA)	72 dB		76 dB		
Environmental noise (LwA)	104 dB		103 dB		
Vibration to whole hand/arm	<2.5 m/s <sup>2</sup>				

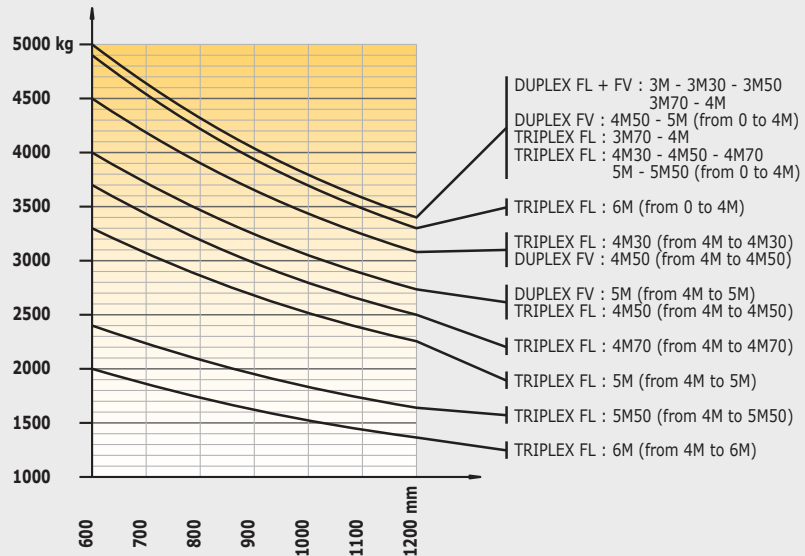


## Charts without sideshift attachment

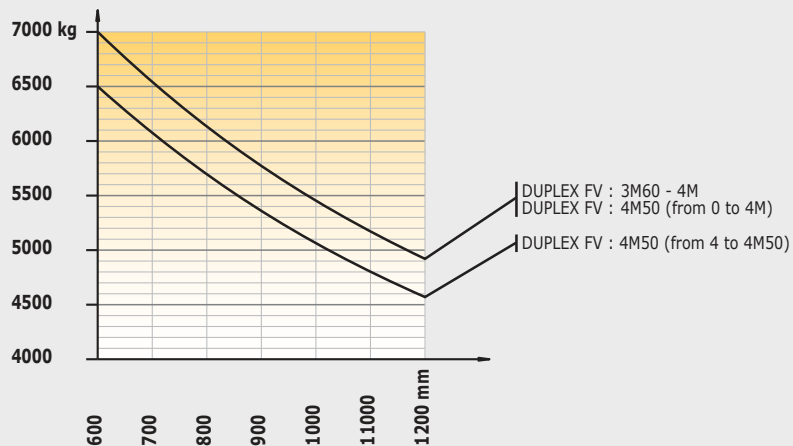
### M-X 30



### M-X 50



### M-X 70

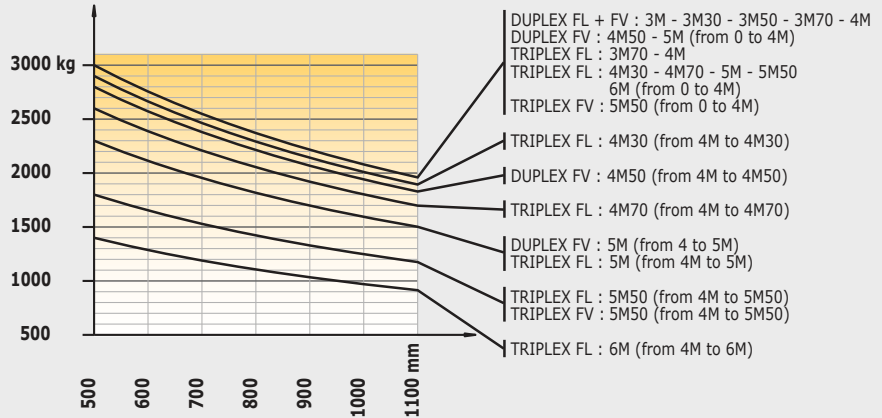


FV = Full Visibility  
FL = Free Lift

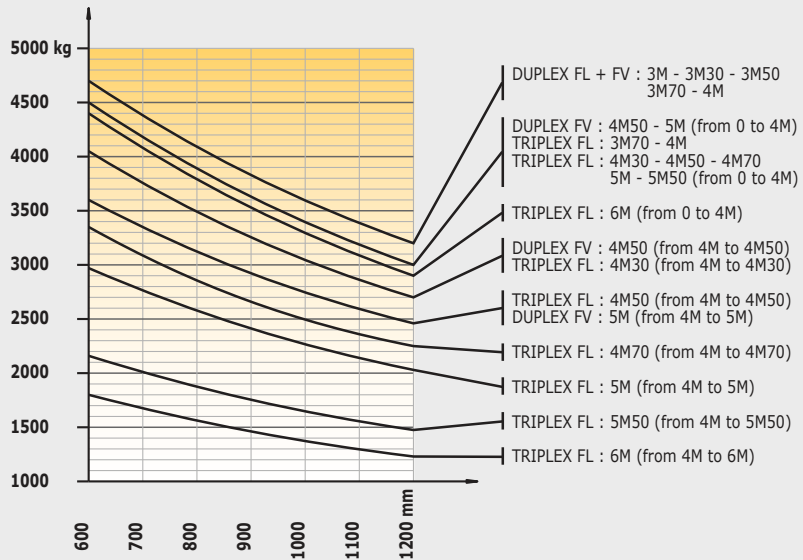


## Charts with sideshift attachment

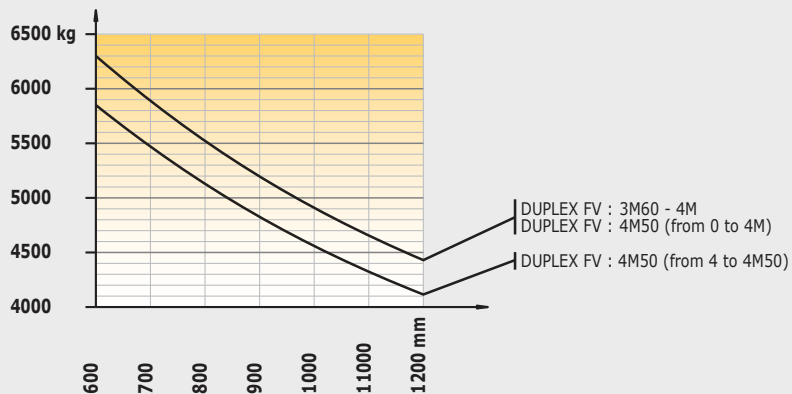
### M-X 30



### M-X 50



### M-X 70



FV = Full Visibility  
FL = Free Lift

Your nearest **MANITOU** dealer:



Head office:  
B.P. 249 - 430 rue de l'Aubinière - 44158 Ancenis Cedex - France  
Tel: 00 33 (0)2 40 09 10 11 - Fax: 00 33 (0)2 40 09 10 97  
[www.manitou.com](http://www.manitou.com)