

MANISCOPIC


MT 1440
SLT & SLT ULTRA




- Maximum lifting height : 13.60 m
- Capacity : 4000 kg
- Maximum forward reach : 9.80 m
- Torque convertor
- Hydraulic stabilizers
- Frame levelling


 **MANITOU**

MT 1440 SLT/SLT ULTRA


 **Lifting capacity** 4000 kg
 at 500 mm from forks heels.
 Tipping load at maximum reach 1460 kg
 Tear out force with bucket
 to ISO 8313 7400 daN


 **Lifting height** : 13.60 m
Times : unladen / loaded (in s)
 Lifting 11 9/12 4
 Lowering 8 2/7 7
 Simultaneous extension 1st and 2nd booms ... 17.4/15
 Simultaneous retraction 1st and 2nd booms ... 15/14.5
 Time unladen (in s)
 Crowd 4.8
 Dump 3.9


 **Tyres**
 15.5/80-24


 **Forks** (mm)
 Length 1200
 Width x thickness 125 X 50
 Maximum distance between forks 1040
 Carriage rotation 124°

 **Multidisc brakes - hydraulically assisted on both axles**

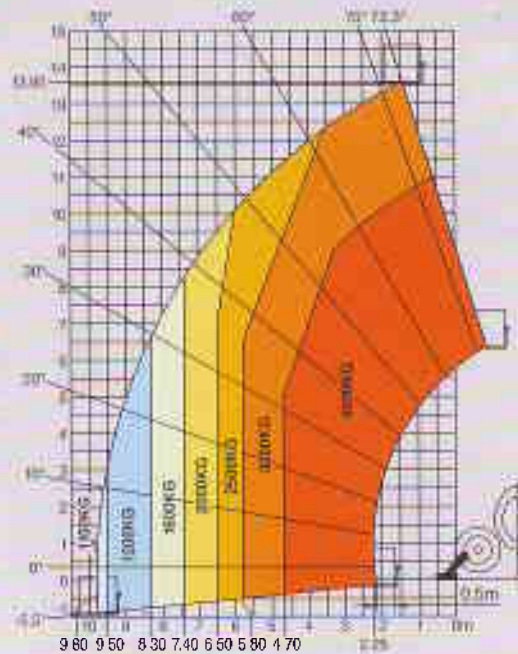
 **PERKINS Engine**
 Type 1104C 44 Turbo
 Capacity 4 cylindres - 4400 cm³
 Power (ISO/TR 14396) : 100 HP/74.5 kw
 at 2200 rpm
 Maximum torque 412 Nm at 1400 rpm
 Direct Injection
 Water Cooling

 **Transmission** Torque convertor
 Electro-hydraulic reversing shift
 4 speeds forward and reverse
 Maximum travel speed 25 km/h

 **Hydraulics**
 Lifting/tilting pump
 gear type 260 bars/163 l/mn
 Flow divider with priority to steering and brakes

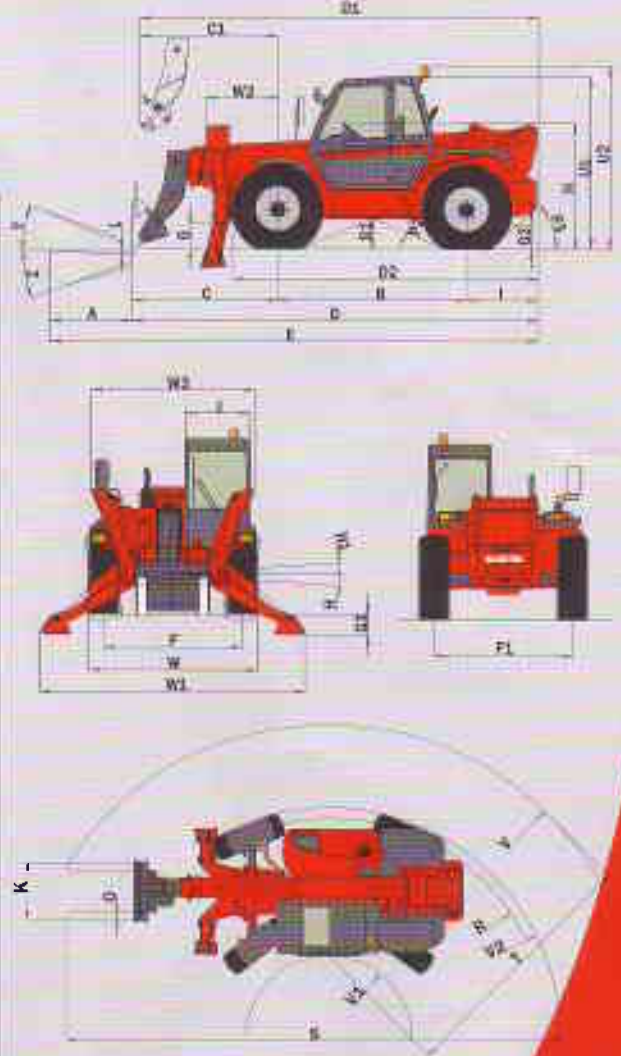
 **Capacities**
 Cooling system 18.5 l
 Engine oil 11 l
 Hydraulic oil 126 l
 Transmission oil 15.1 l
 Fuel tank 135 l

 **Weight unladen** (with forks) 11070 kg
Overall width 2.40 m
Overall height 2.60 m
Turning radius (outside wheels) 4.16 m
Overall length 6.09 m
Ground clearance 0.48 m
Drawbar pull 10090 daN



Under
 EN 1459
 annexe B

A	1200
B	2770
C	2224
C1	2348
D	6090
D1	6168
D2	4405
E	7290
F	1990
F1	1990
G	480
G1	475
G2	480
G3	290
H	7°
H1	7°
I	1050
J	950
K	1040
L	50
N	1880/1940
O	125
P2	45,5°
P3	50°
R	3950
S	9010
T	4370
U1	2605
U2	2785
V	5840
V1	1470
V2	4157
W	2405
W1	3820
W2	1050
W3	2350
Y	12°
Z	112°



This equipment is fitted with a CE mark and is intended for use in the European Union. For more details, contact your MANITOU dealer.

